

# HABITAT HEROES: YOU CAN PREVENT THE SPREAD OF INVASIVE SPECIES!

MARCH 2026



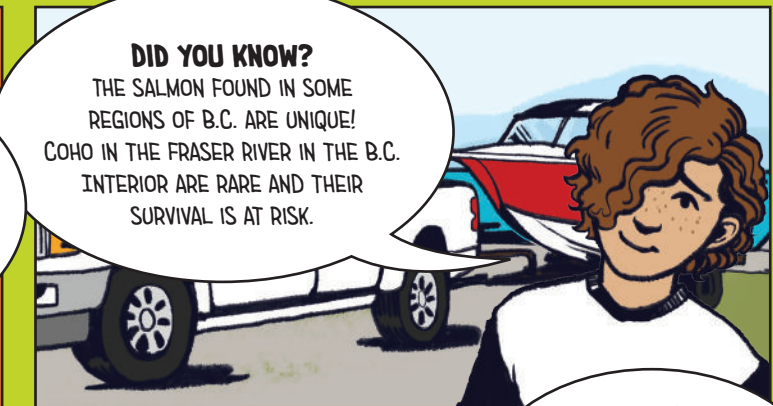
**WELCOME FRIENDS!**  
YOU'RE ON A JOURNEY TO LEARN ALL ABOUT FISH AND THEIR WATERY HOMES.

DID YOU KNOW THAT SOME SPECIES OF FISH ARE **AT RISK**?

THIS MEANS THAT THEY ARE NATIVE TO BRITISH COLUMBIA, BUT THEIR SURVIVAL IS AT RISK AND THEY NEED OUR HELP. OTHER ANIMALS AND PLANTS ARE **INVASIVE SPECIES**, MEANING THAT THEY WERE BROUGHT HERE FROM AFAR AND ARE NOW SPREADING AND HARMING WILDLIFE AND HABITATS.

JOIN US TO LEARN WHAT YOU CAN DO TO BE A HABITAT HERO! HELP PROTECT AT-RISK SPECIES AND PREVENT THE SPREAD OF INVASIVE SPECIES!

-  **SPECIES AT RISK**
-  **INVASIVE SPECIES**
-  **HABITAT HERO**



**DID YOU KNOW?**  
THE SALMON FOUND IN SOME REGIONS OF B.C. ARE UNIQUE! COHO IN THE FRASER RIVER IN THE B.C. INTERIOR ARE RARE AND THEIR SURVIVAL IS AT RISK.

WHEN I'M AROUND, SALMON DON'T GROW VERY BIG BECAUSE I EAT ALL THEIR FOOD! I ALSO LOVE TO EAT YOUNG SALMON!



# FISHY FRIENDS OR FOES WORD SEARCH

Find these native and invasive fish in the puzzle! Circle the **native fish in green** and the **invasive fish in red**. Words can go in any direction (even diagonally!) and can share letters as they cross over each other.



## NATIVE FISH / SPECIES AT RISK

- BURBOT
- BULL TROUT
- CUTTHROAT TROUT
- PACIFIC SALMON
- STEELHEAD
- STICKLEBACK
- SUCKER
- WHITE STURGEON



## INVASIVE FISH

- ASIAN CARP
- NORTHERN PIKE
- BULLHEAD
- GOLDFISH
- LARGEMOUTH BASS
- SMALLMOUTH BASS
- TENCH
- YELLOW PERCH

W	S	B	Z	Y	U	S	X	B	N	V	U	O	Z	I	D	W	H
H	S	U	O	S	D	I	T	M	S	C	B	K	S	C	A	A	L
I	A	R	F	M	U	A	P	I	C	Q	C	A	U	C	E	G	H
T	B	B	N	F	I	C	E	S	C	X	X	T	H	O	H	B	I
E	H	O	R	B	Q	C	K	H	C	K	T	R	X	J	L	U	V
S	T	T	X	R	R	S	A	E	L	H	L	U	B	P	L	B	J
T	U	N	K	C	Z	I	S	U	R	E	T	E	M	F	U	F	H
U	O	N	B	I	K	Y	I	O	L	Y	E	K	B	L	B	C	X
R	M	R	Q	P	C	H	A	C	Z	Z	P	T	L	A	N	V	R
G	L	T	N	U	F	T	N	R	O	U	E	T	S	E	C	G	M
E	L	L	X	B	T	O	C	K	N	J	R	P	T	I	L	K	H
O	A	F	U	R	U	G	A	U	R	O	G	G	K	V	C	S	R
N	M	Z	O	A	V	Z	R	E	U	H	Q	N	P	U	I	F	V
A	S	U	Q	Z	W	W	P	T	Y	F	Z	H	T	F	Z	P	P
N	T	Y	E	L	L	O	W	P	E	R	C	H	D	H	C	M	N
E	K	I	P	N	R	E	H	T	R	O	N	L	U	X	N	V	Q
P	A	C	I	F	I	C	S	A	L	M	O	N	I	S	J	R	K
S	S	A	B	H	T	U	O	M	E	G	R	A	L	K	O	G	L



**NORTHERN PIKE** ARE NATIVE TO NORTHEASTERN B.C. BUT WERE INTRODUCED TO OTHER PARTS OF THE PROVINCE WHERE THEY ARE INVASIVE. THEY CAN GROW TO BE OVER 130 CM (ALMOST 4.5 FEET) LONG, MAKING THEM THE LARGEST INVASIVE FRESHWATER FISH IN B.C.

WOW, THAT'S TALLER THAN ME!



NATIVE **CUTTHROAT TROUT** GET THEIR NAME FROM A RED "SLASH" MARKING BELOW EITHER SIDE OF THEIR JAW. WESTSLOPE CUTTHROAT TROUT ARE A SPECIES AT RISK IN SOUTHEASTERN B.C. THEY NEED COLD, CLEAN WATER AND HEALTHY RIVERBANKS WITH SHADE FROM NATIVE TREES AND SHRUBS.



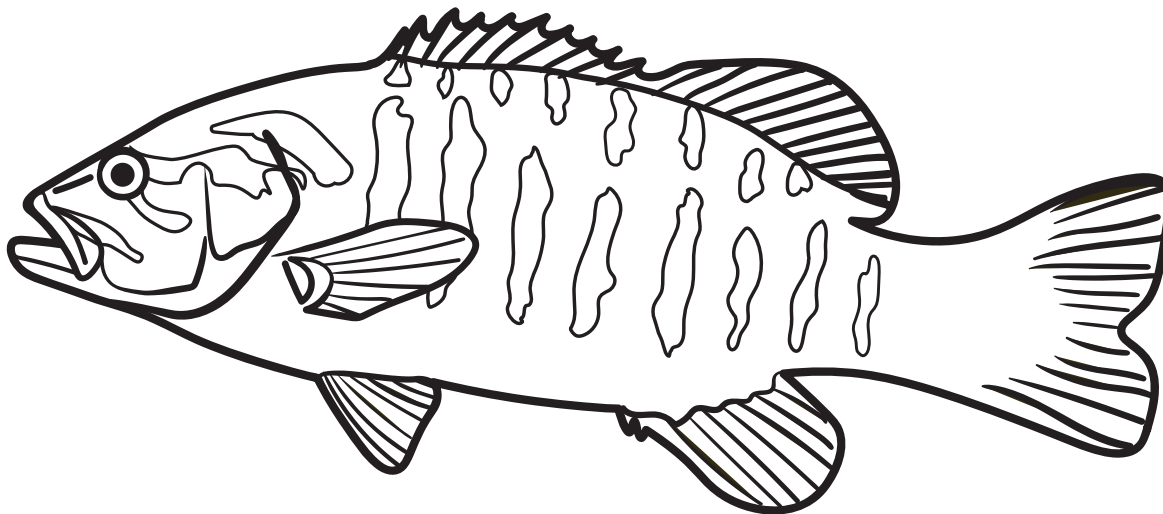
**BE A HABITAT HERO!** Use only the marked paths and boat ramps when going to the water. This helps protect where plants and animals live.

# FISH TALES



I'm a **smallmouth bass** and I come from east of the Rockies, but I was brought to B.C. because people love to fish for me. Now I'm invasive in B.C. and I have a big appetite for native wildlife, including frogs, aquatic insects, and fish—even young salmon! I eat so much that there isn't as much food for other native fish to eat. I can also spread diseases to salmon and other native fish.

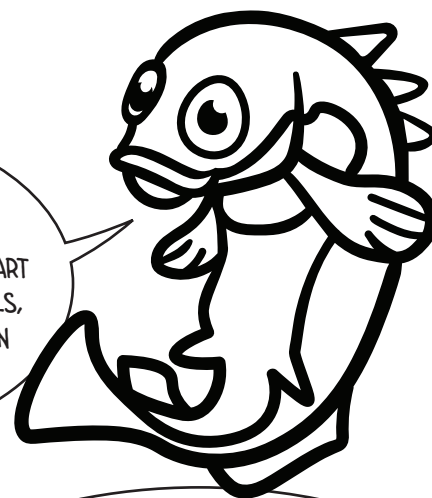
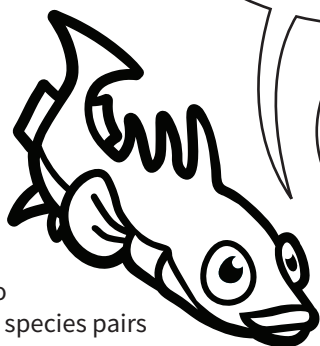
You can tell me apart from my cousin, the **largemouth bass**, by looking at our sides. I have vertical (up and down) stripes and largemouth bass have one long stripe that runs along their body from their gills to their tail.



We are the endangered stickleback species pair. We are only found in a few lakes on Texada Island in southern B.C. Our official name is a mouthful! **Vananda Creek benthic and limnetic threespine stickleback species pair** (say that 3 times fast)! For short, you can call us the Texada Island stickleback species pair. **Species Pair** means there are two of us who are closely related, living in the same lake but we look and behave differently. There are two other known stickleback species pairs still living in B.C.

I'M A **LIMNETIC STICKLEBACK**. I'M SMALLER THAN THE BENTHICS AND I EAT PLANKTON. I SWIM IN A SCHOOL WITH OTHER LIMNETICS IN THE OPEN WATER.

I'M A **BENTHIC STICKLEBACK**. I HIDE IN THE AQUATIC PLANTS IN THE SHALLOW PART OF THE LAKE. I EAT INSECTS, SNAILS, AND WORMS AND I'M LARGER THAN THE LIMNETICS.



**DID YOU KNOW?**  
SMALLMOUTH BASS NUMBERS CAN GROW QUICKLY! FEMALES LAY AROUND 10,000 EGGS AT ONCE AND CAN SPAWN MORE THAN ONCE A SEASON!



**BE A HABITAT HERO!**  
You can help stop invasive species! Don't use live bait and never move live fish to different lakes or streams.



**DID YOU KNOW?**  
TWO OTHER STICKLEBACK SPECIES PAIRS WENT EXTINCT BECAUSE INVASIVE SPECIES WERE INTRODUCED TO THEIR LAKES. STICKLEBACK SPECIES PAIRS WENT EXTINCT IN ENOS LAKE ON VANCOUVER ISLAND AFTER SIGNAL CRAYFISH WERE LET LOOSE, AND AT HADLEY LAKE ON LASQUETI ISLAND THE RARE STICKLEBACKS WERE ALL EATEN BY INVASIVE BROWN BULLHEAD.

USE THE ALPHABET KEY TO UNCOVER THE SECRET MESSAGE. THE MESSAGES AROUND THE PUZZLE ARE CLUES. WHAT WILL HAPPEN WHEN YOU TAKE THESE ACTIONS?



# CRACK THE SECRET CODE!

A	B	C	D	E	F	G	H	I	J	K	L	M
N	O	P	Q	R	S	T	U	V	W	X	Y	Z



## DON'T LET IT LOOSE

Use boat ramps, designated trails, and docks to protect sensitive habitats

Leave no trace!  
Pack it in,  
pack it out



Dry all parts of your boat and gear completely



Always check the fishing regulations and guidelines for the area you are in

Don't use live bait! It could become an invasive species or spread disease to native fish



,

!

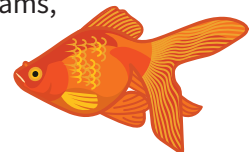


Drain all water from your boat and gear



Use a field guide or iNaturalist.ca to identify what you catch – and report any invasive species you find!

Never let fish or pets loose in the wild or dump aquariums into rivers, streams, or lakes!



Never move live fish from one waterbody to another



Clean off all plants, animals, and mud from your boat and gear

Scan to play a game and learn more!



SOLUTION: I.M.A HABITAT HERO