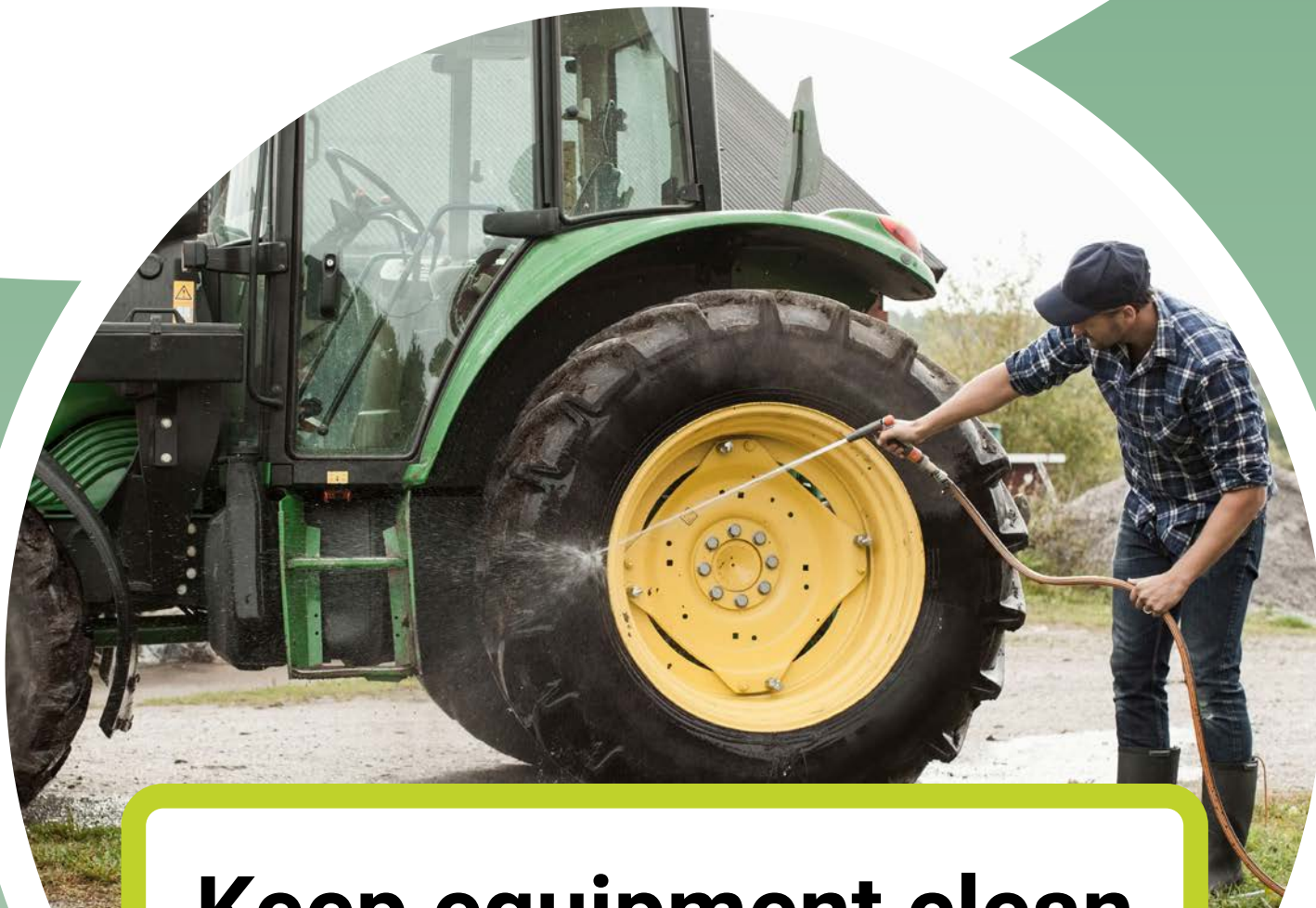


# Help Stop the Spread!

## Best Management Practices for Agricultural Invasive Plants

### What are invasive plants?

Invasive plants have been introduced, either on purpose or by accident, into an environment from other areas. Without any controls, natural or otherwise, they can take over, impacting soil quality, human health and biodiversity. Invasive plants compete with native vegetation and crops for water, nutrients and space.



### Keep equipment clean

Remove invasive plant parts or seeds



### Minimize movement of soil and materials

Prevent invasive plants from spreading field to field



### Choose certified weed-free seed

Prevent the introduction of invasive plants



Scan to learn more about invasive plants!

[BCINVASIVES.CA](http://BCINVASIVES.CA)