

**JAPANESE
BEETLE
ALERT**



INVASIVE INSECT

Japanese beetle look-alikes

Popillia japonica

JUNE 2025



BCINVASIVES.CA

ABOUT JAPANESE BEETLE

The Japanese beetle (*Popillia japonica*) is an invasive pest destructive to ornamental plants, turfgrasses and many of BC's horticulture and agriculture industries.

The three main identifying characteristics are:

- » metallic green head
- » metallic copper-brown wing coverings
- » six tufts of white hair on either side of the abdomen

INVASIVE SPECIES

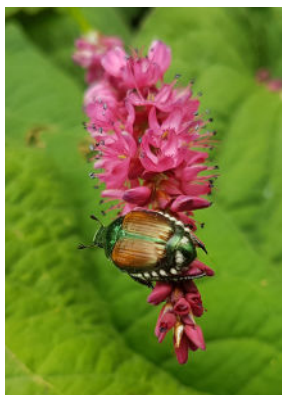
Actual size: 10 mm



J. Berger, Bugwood.org



J. Berger, Bugwood.org



**If a Japanese beetle is found, please call 604-292-5742
OR email: BCPF.Japanese.Beetle@inspection.gc.ca.**

Include a clear photo, the exact location, and the date of the sighting.

LIFE CYCLE



Larva

actual size,
25 mm (1")
D. Cappaert, Bugwood.org



Adult

actual size,
10 mm (3/8")
D. Holden, CFIA

Japanese beetle larvae can be found in sod, top soil, on roots and in potted plants. They feed on the roots of turf, ornamental grasses and other plants, severely damaging the plants. Japanese beetle larvae overwinter 4"-8" below the surface.



Adults feed on the flowers, fruits and leaves. Adult females commonly lay their eggs in well watered lawns.



Dr. D Shetlar, Bugwood.org

Japanese beetle all stages.



HOW THE JAPANESE BEETLE SPREADS

Japanese beetles often spread through human activity. Adults can hitchhike on yard waste, plants, soil, or outdoor equipment. The adult flight period runs from **June 15 to October 15**, when beetles are flying and temperatures are above 21°C.

FEEDING DAMAGE

Your help and vigilance is needed to protect our urban, park, and natural areas from damage. The beetle feeds on the roots of grass and more than 300 plant species including roses, fruit trees, grapevines, and other landscape and food plants. Japanese beetle is not a risk to human or animal health or food safety.



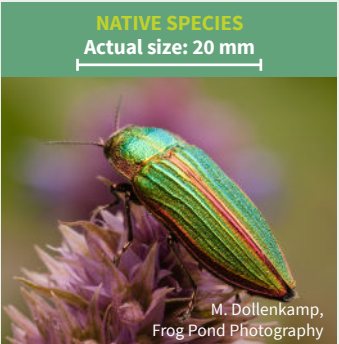
LOOK-ALIKES NATIVE SPECIES

(Photos do not represent actual size; scale bars represent actual size of typical body length)

These insects are commonly mistaken as Japanese beetle.



Banasa Stink Bug
(*Banasa* spp.)



Golden Buprestid
(*Buprestis aurulenta*)



Green Rose Chafer
(*Dichelonyx backii*)



Green Stink Bug
(*Chlorochroa* spp.)



St. John's Wort Beetle
(*Chrysolina hyperici*)



Ten-Lined June Beetle
(*Polyphylla occidentalis*)

LOOK-ALIKES INVASIVE SPECIES

These invasive insects are commonly mistaken as Japanese beetle. To report, visit our website or contact your local invasive species group.

INVASIVE SPECIES
Actual size: 15 mm



S. Ellis, Bugwood.org

Brown Marmorated Stink Bug
(*Halyomorpha halys*)

INVASIVE SPECIES
Actual size: ~ 10 mm



D. Miller, Bugwood.org

Emerald Ash Borer
(*Agrilus planipennis*)

INVASIVE SPECIES
Actual size: 10 mm



R. Szczygiel, Flickr.com

European Brown Chafer
(*Amphimallon majale*)

INVASIVE SPECIES
Actual size: 5 mm



D. Henton-Jones, Flickr.com

Viburnum Leaf Beetle
(*Pyrrhalta viburni*)

FIND OUT MORE

» For more information or to be added to our Japanese beetle e-News, please visit bcinvasives.ca/JB

BCINVASIVES.CA
info@bcinvasives.ca
1-888-933-3722



**Invasive Species
Council of BC**

ADDITIONAL CONTACT INFO