

Montana

MUSSEL RESPONSE



*Montana Fish,
Wildlife & Parks*

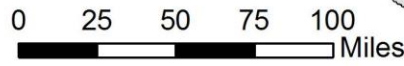
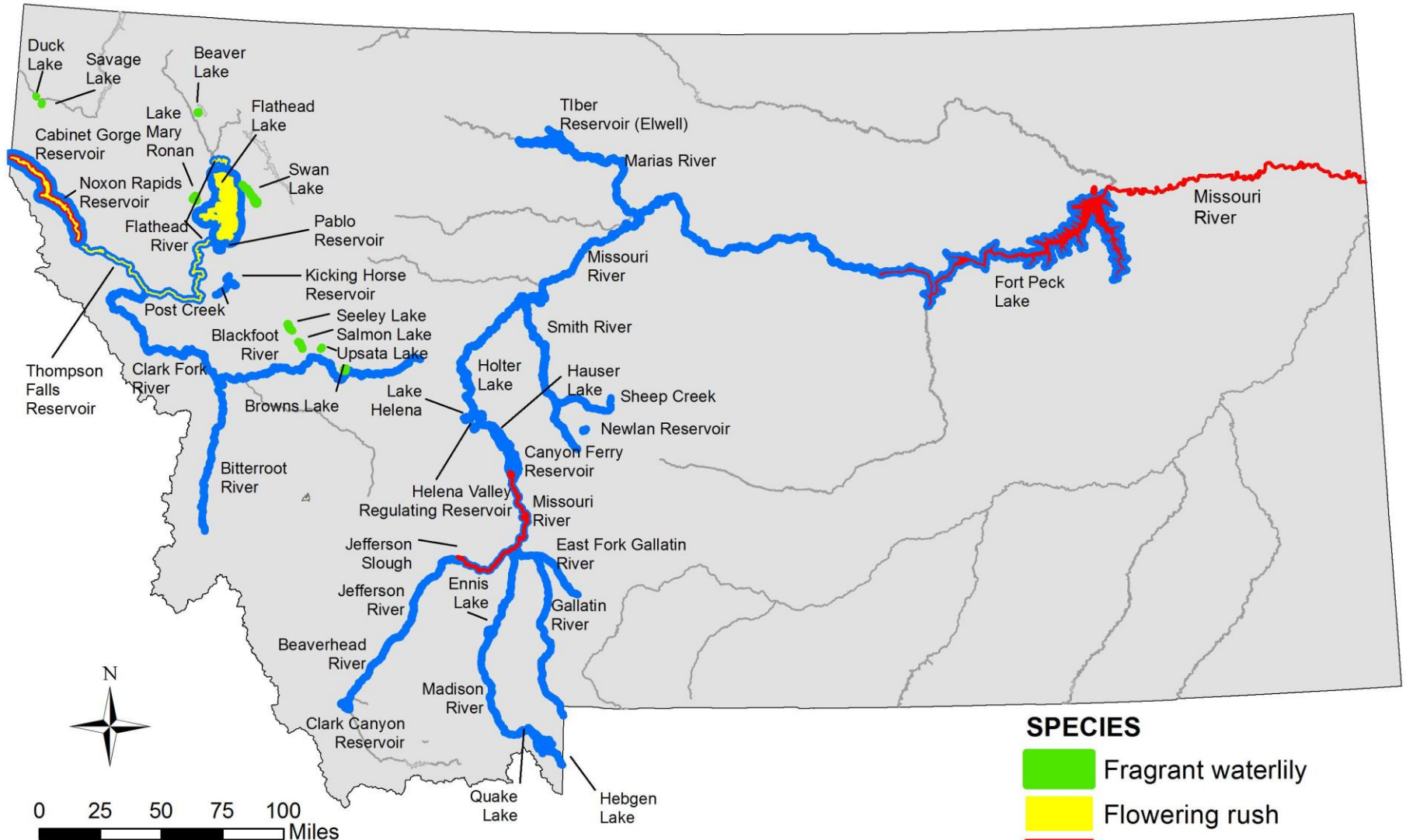


Montana
MUSSEL RESPONSE



**Montana Fish,
Wildlife & Parks**

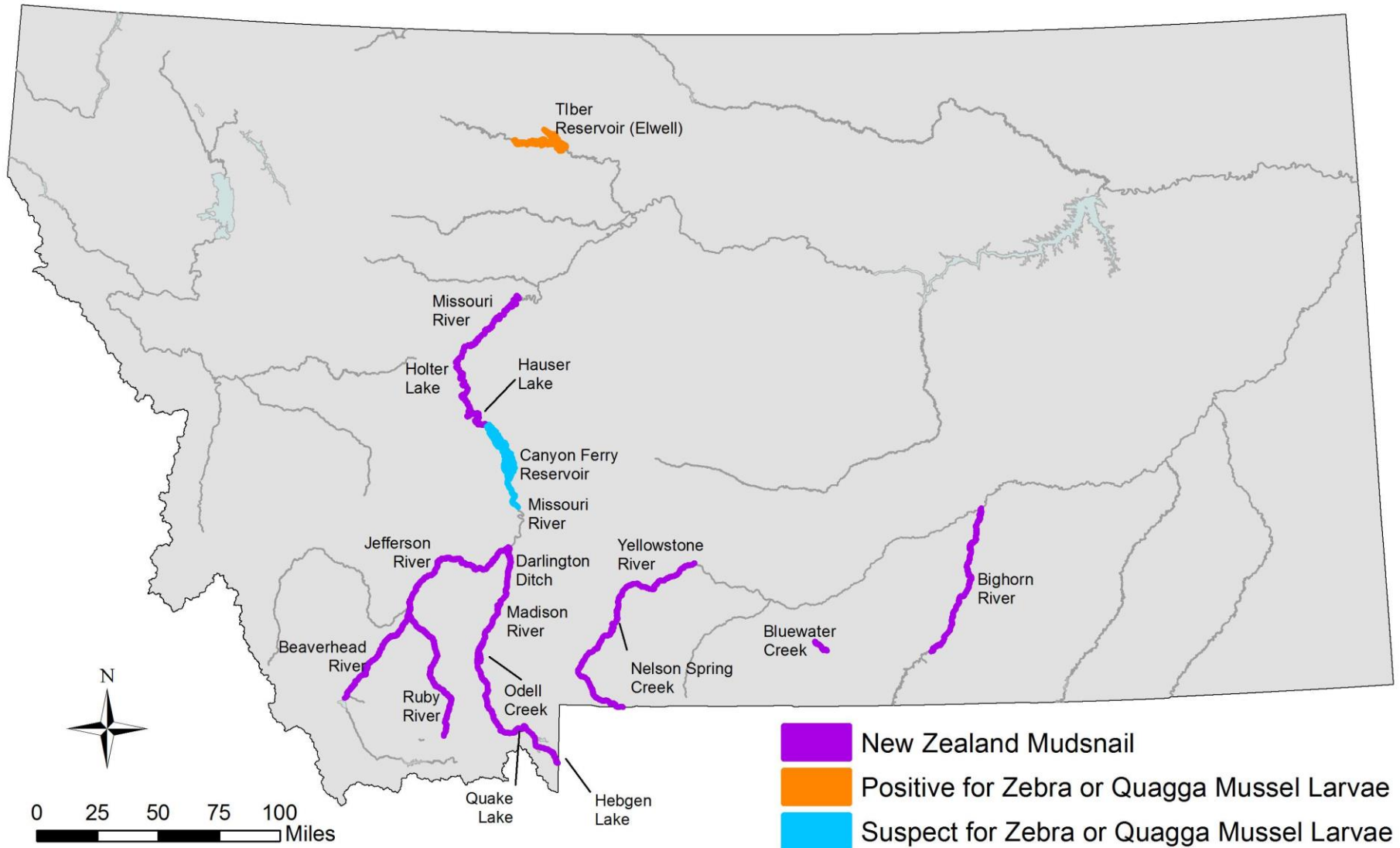
Aquatic Invasive Plant Locations in Montana - 2016



SPECIES

- Fragrant waterlily
- Flowering rush
- Eurasian watermilfoil
- Curly-leaf pondweed




Aquatic Invasive Mollusk Locations in Montana - 2016



0 25 50 75 100 Miles



Map produced by MT Fish, Wildlife, & Parks

-  New Zealand Mudsnaill
-  Positive for Zebra or Quagga Mussel Larvae
-  Suspect for Zebra or Quagga Mussel Larvae

ZEBRA MUSSEL



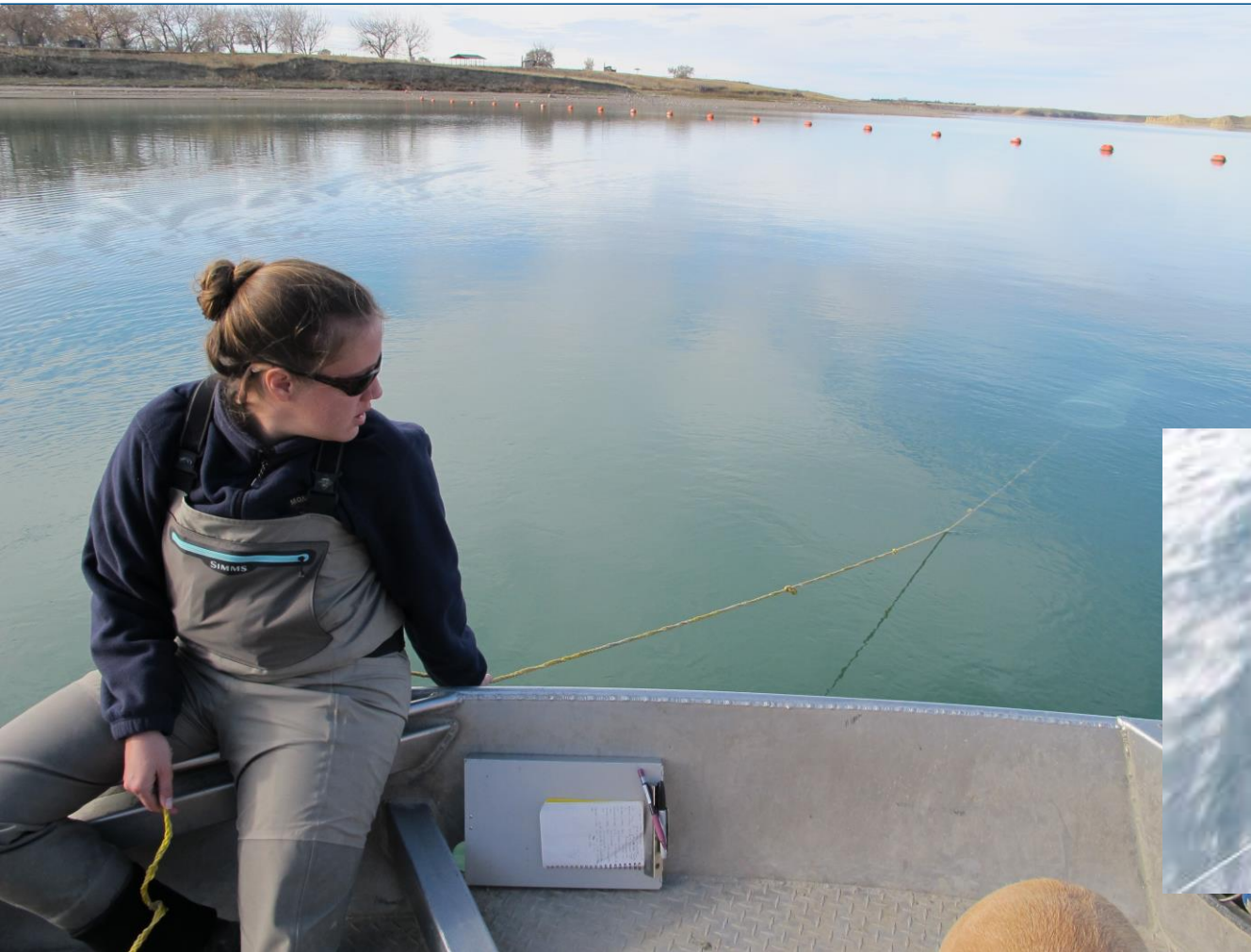
QUAGGA MUSSEL



Montana
MUSSEL RESPONSE



Montana Fish,
Wildlife & Parks



Montana
MUSSEL RESPONSE



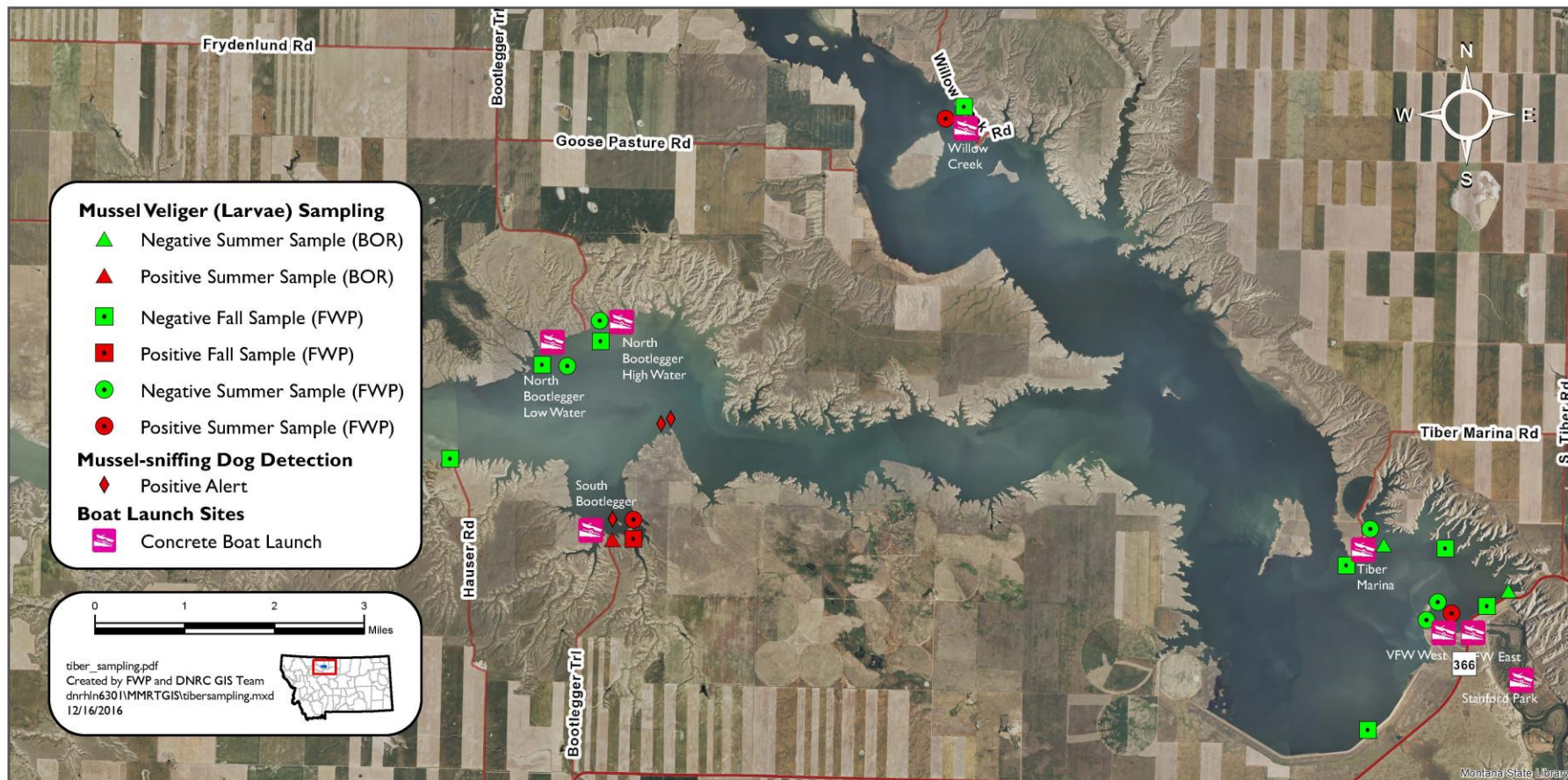
*Montana Fish,
Wildlife & Parks*



Invasive Species Mussel Sampling

Tiber Reservoir, MT

Montana Mussel Response Team, December 2016

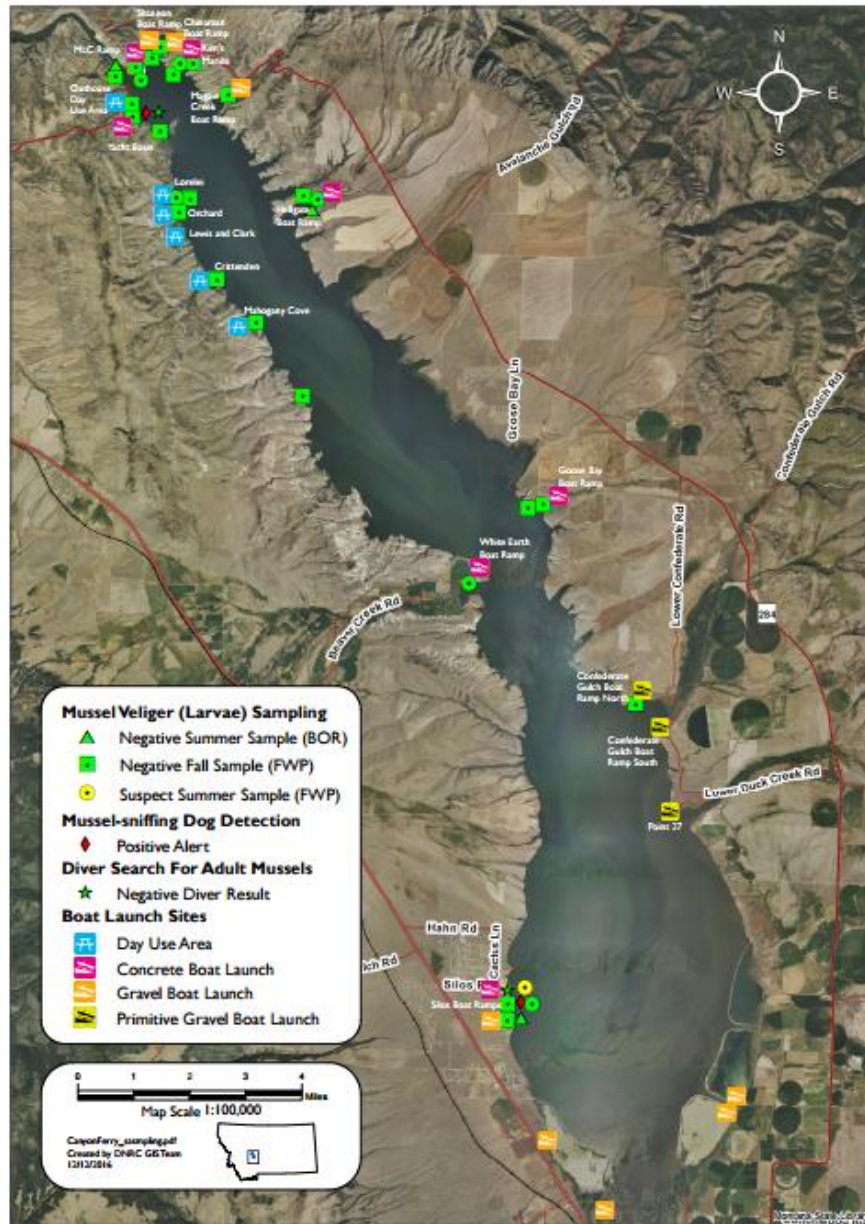




Invasive Species Mussel Sampling

Canyon Ferry Reservoir, MT

Montana Mussel Response Team, December 2016

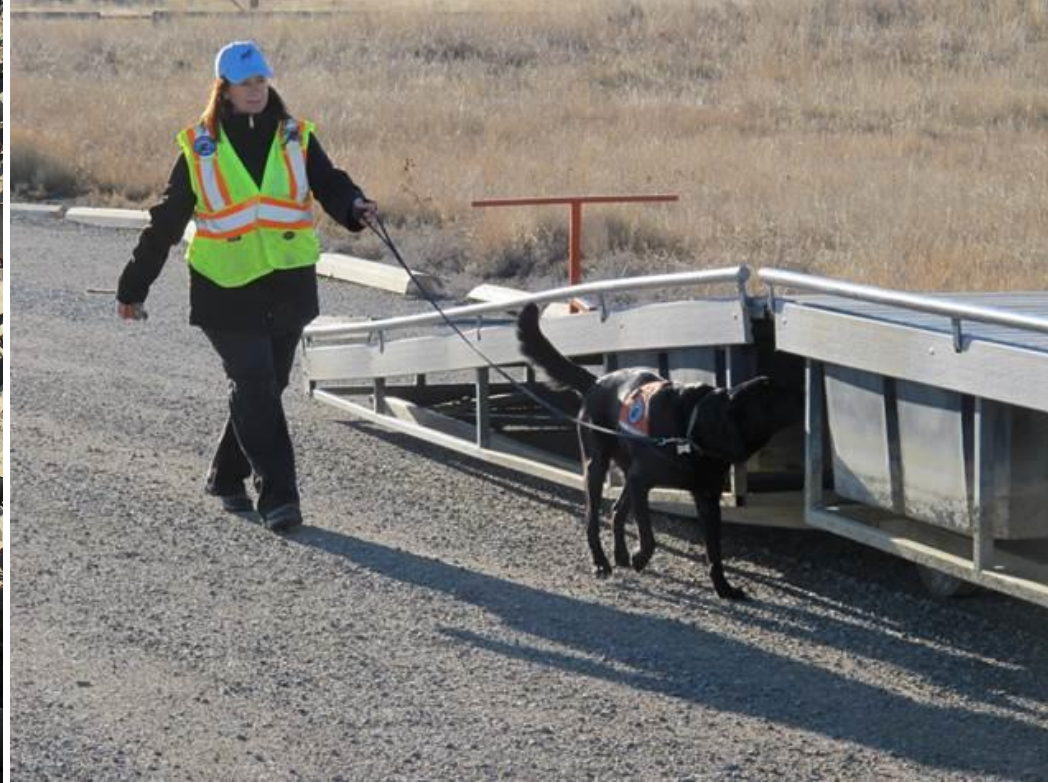




Montana
MUSSEL RESPONSE



Montana Fish,
Wildlife & Parks



Montana
MUSSEL RESPONSE



Montana Fish,
Wildlife & Parks



Montana
MUSSEL RESPONSE



Montana Fish,
Wildlife & Parks



Montana
MUSSEL RESPONSE



Montana Fish,
Wildlife & Parks



Montana
MUSSEL RESPONSE



Montana Fish,
Wildlife & Parks



Montana
 MUSSEL RESPONSE



Montana Fish,
 Wildlife & Parks

STATE OF MONTANA
OFFICE OF THE GOVERNOR
EXECUTIVE ORDER No. 18-2016

EXECUTIVE ORDER PROCLAIMING AN INVASIVE SPECIES EMERGENCY TO
EXIST IN THE STATE OF MONTANA

WHEREAS, invasive *Dreissenid* mussel larvae, commonly referred to as zebra and quagga mussels, have been detected in bodies of water in the State of Montana;

WHEREAS, the existence and spread of invasive *Dreissenid* mussels within waters of the State of Montana poses a significant threat to the natural resources of the state;

WHEREAS, invasive aquatic species comprise a grave threat to the waters and economic resources within the State of Montana, and such introduced species are best controlled when experts take management measures quickly after their introduction is discovered;

WHEREAS, the Department of Fish Wildlife and Parks and the Department of Natural Resources and Conservation both have responsibility for control, containment, and prevention of introduction and spread of aquatic invasive species;

WHEREAS, the coordination of a rapid response effort to address this issue is of utmost importance to the State of Montana;

WHEREAS, response resources from these and other agencies are currently working on management strategies;

WHEREAS, under these conditions, the Directors of both agencies have the authority to direct the personnel within their departments to commit time, personnel, funding and resources to meet the requirements and contingencies that may arise from this emergency; and

WHEREAS, the Governor has authority under Mont. Code Ann. 80-7-1013(1) to declare an invasive species emergency and may spend funds to meet needs that arise from this emergency pursuant to Mont. Code Ann. 10-3-302 and 312, and take other necessary action.

NOW, THEREFORE, I, STEVE BULLOCK, Governor of the State of Montana, pursuant to the authority vested in me as Governor under the Constitution and the laws of the State of Montana, do hereby declare that an invasive species emergency exists, as defined in Mont. Code Ann. 80-7-1013, and direct as follows;

- 1) The Directors of the Departments of Fish, Wildlife and Parks and Natural Resources and Conservation shall develop an Incident Management Organization to manage the State of Montana's response to this Invasive Species Emergency; and

Executive Order

- Directed state agencies to work together on an interagency response
- Mobilize an incident command team to rapidly respond
- Provided emergency funding
- Directed the Mussel Response Team to manage the incident and develop response and long-term plans



Montana
MUSSEL RESPONSE



Montana Fish,
Wildlife & Parks



Montana
MUSSEL RESPONSE



**Montana Fish,
Wildlife & Parks**



Montana
MUSSEL RESPONSE



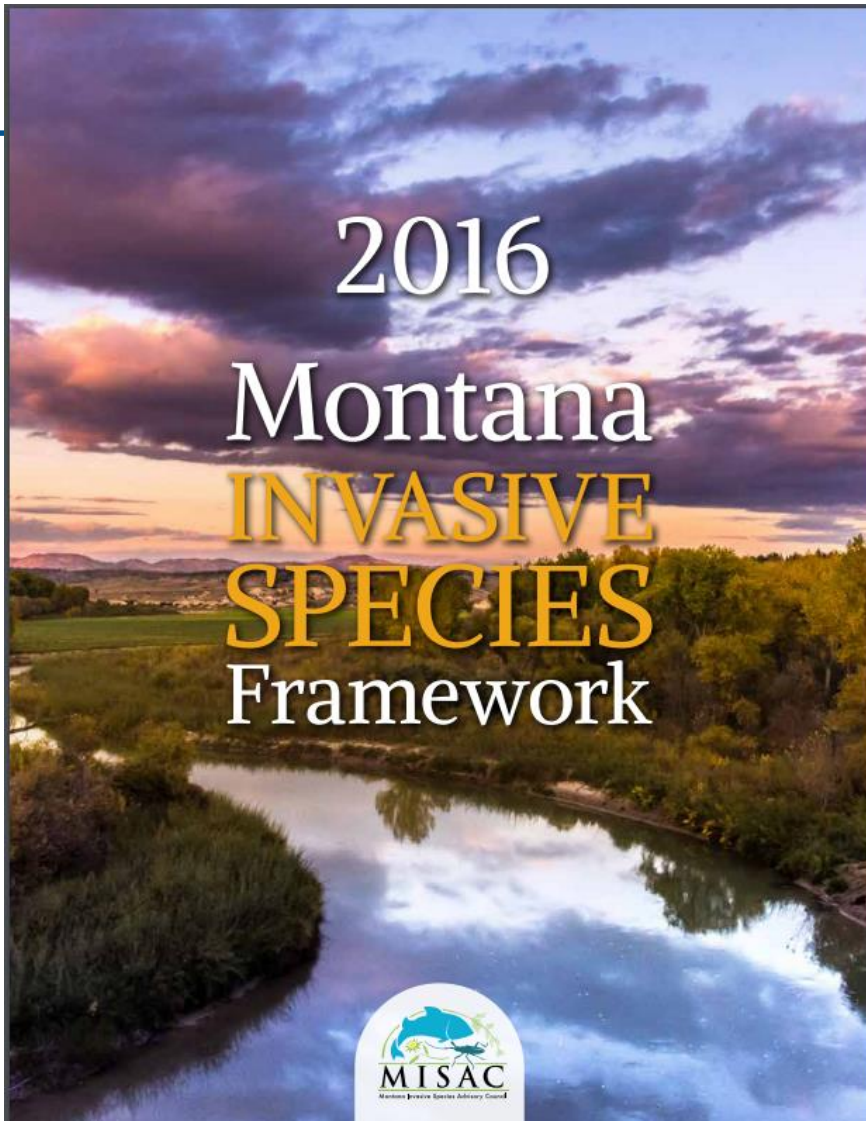
Montana Fish,
Wildlife & Parks



Montana
MUSSEL RESPONSE

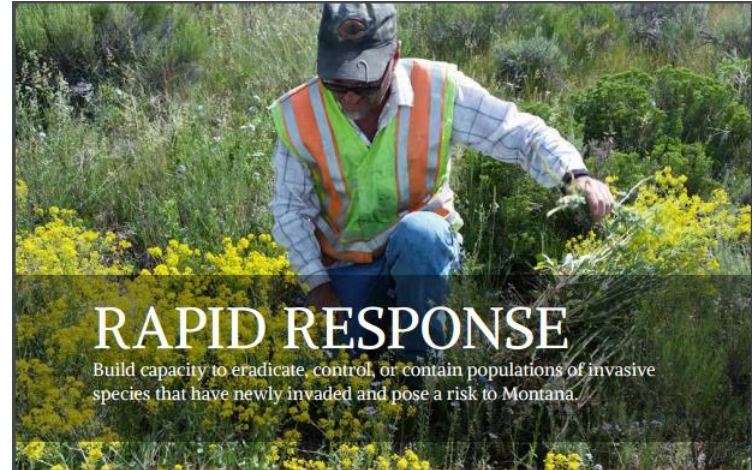


*Montana Fish,
Wildlife & Parks*



2016

Montana INVASIVE SPECIES Framework



RAPID RESPONSE

Build capacity to eradicate, control, or contain populations of invasive species that have newly invaded and pose a risk to Montana.

OBJECTIVE

Develop a generalized rapid response plan for emerging invasive species.

TASK: Review existing plans, summarize existing authorities, and assess gaps in regulatory tools that facilitate rapid response.

TASK: Identify planning needs to improve rapid response capacity.

TASK: Prioritize areas with high-value resources at risk of invasive species introductions.

OBJECTIVE

Improve the capacity to respond to new invasions of high priority invasive species to contain their spread, limiting the damage they cause.

TASK: Develop necessary regulatory tools for rapid response to invasive species.

TASK: Draft formal agreements that reflect the resources needed to carry out generalized rapid response plans.



Montana
MUSSEL RESPONSE



Montana Fish,
Wildlife & Parks

Montana

MUSSEL RESPONSE

Invasive Mussel Framework v5



**A Strategic Framework to Direct Montana's
Aquatic Invasive Species Program Response**

Based on the 2016 Montana Invasive Species Framework



Prepared for: Montana Mussel Response Team
Prepared by: Montana Invasive Species Advisory Council
December 27, 2016

Invasive Mussel Framework Overview

The purpose of the IMF is to recommend appropriate management responses to the invasive mussel emergency.

The recommendations within the IMF represent the five tenets of AIS management, which follow the invasion curve:

Coordination

Prevention

Detection

Rapid Response

Control

In addition to addressing the invasive mussel emergency, the IMF provides added value to strengthen other AIS prevention efforts, as well as invasive species at-large.



Montana
MUSSEL RESPONSE



**Montana Fish,
Wildlife & Parks**



January 16, 2017

Montana Mussel Response

Phone: 406-444-2440 | Email: MusselResponse@mt.gov | Website: MusselResponse.mt.gov
Facebook: [facebook.com/MTMusselResponse](https://www.facebook.com/MTMusselResponse) | Sign Up for Email Updates: <http://bit.ly/mtmussel>



Recommendations

1. Strengthen statewide invasive species program
2. Expand watercraft inspection program
3. Expand AIS monitoring program
4. Strengthen management of the aquatic invasive species program
5. Strengthen statewide invasive species program
6. Develop a future rapid response plan for invasive species



Montana
MUSSEL RESPONSE



Montana Fish,
Wildlife & Parks



Montana
MUSSEL RESPONSE



Montana Fish,
Wildlife & Parks



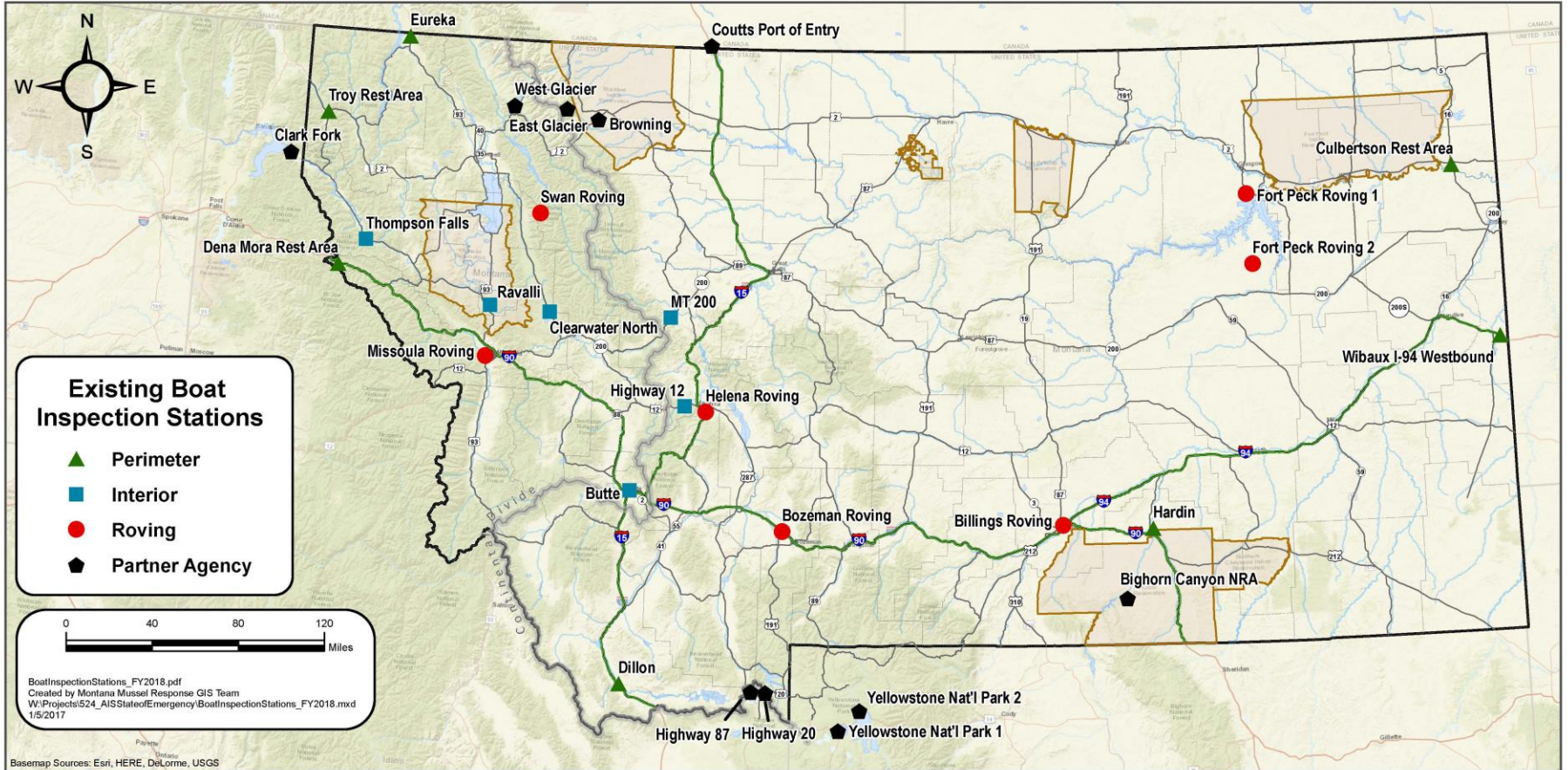
Montana
MUSSEL RESPONSE



Montana Fish,
Wildlife & Parks

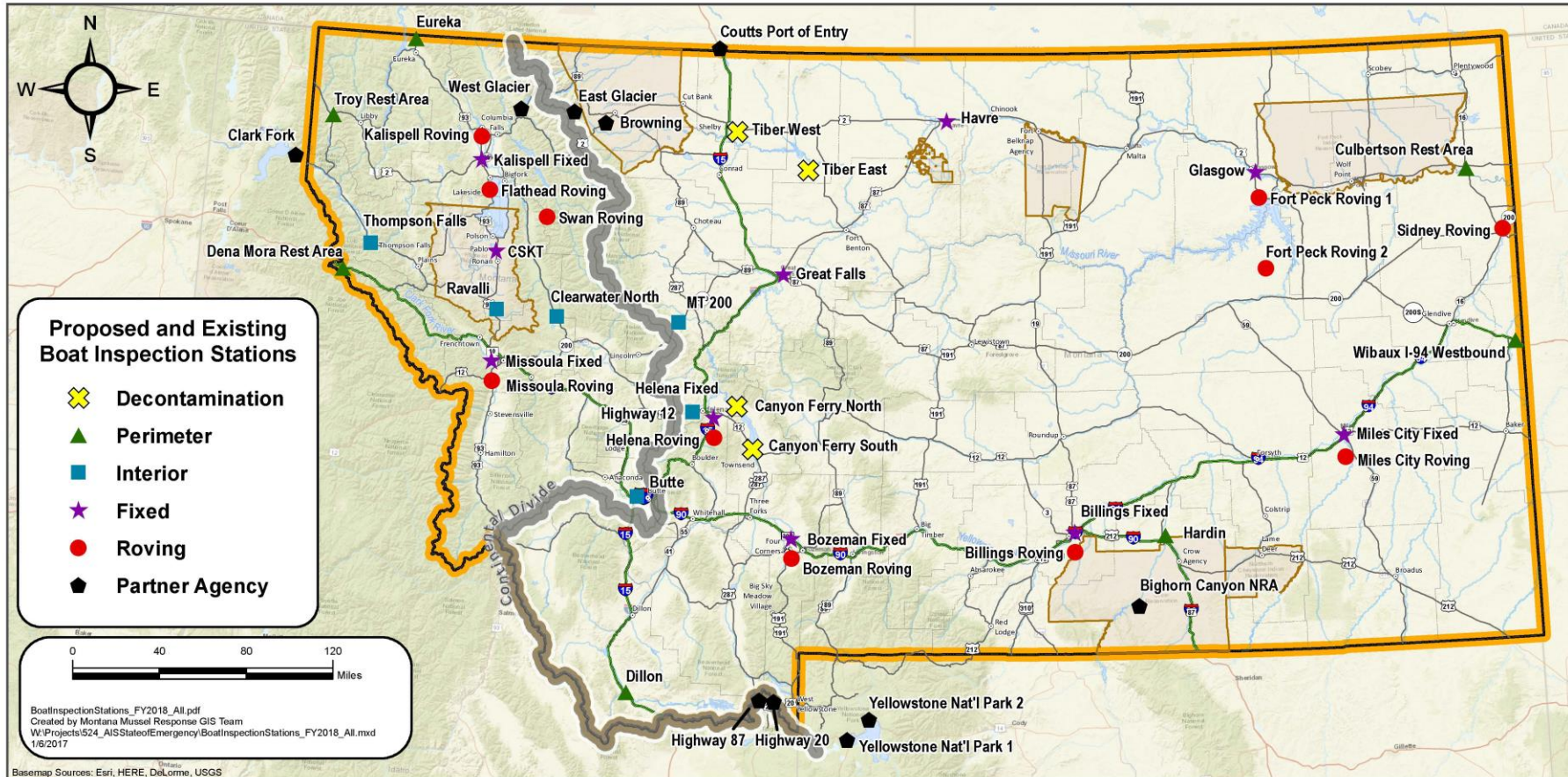


Existing Boat Inspection Stations - FY2017





Proposed and Existing Boat Inspection and Decontamination Stations - FY2018-19

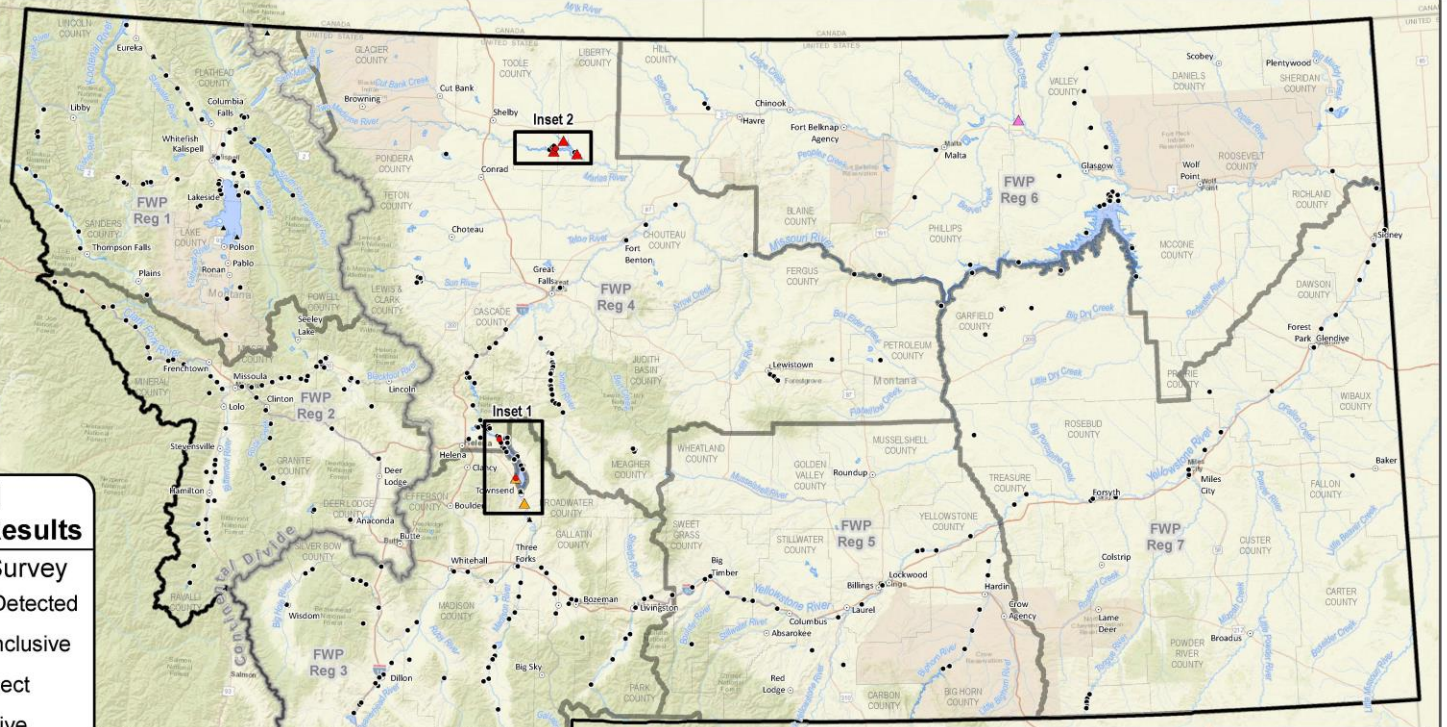
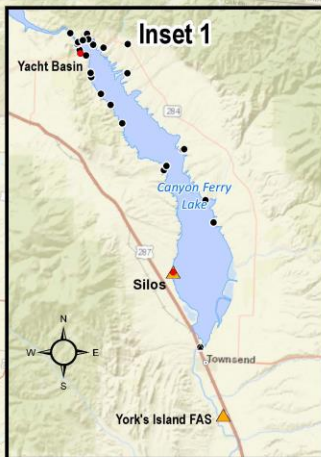




Survey Locations for Dreissenid Mussels in Montana

2016 Results

Montana Mussel Response Team, December 2016



Dreissenid Mussel Survey Locations and Results

Adult Survey

- Not Detected
- Dog Alert

Veliger Survey

- ▲ Not Detected
- ▲ Inconclusive
- ▲ Suspect
- ▲ Positive



Map Scale 1:2,900,000

DreissenidSurveyLocations_2016.pdf
Created by Montana Mussel Response GIS Team
W:\Projects\524_AIS\StateofEmergency\DreissenidSurveyLocations_2016.mxd
12/19/2016

Data compiled from surveys conducted in 2016 by Montana DNRC, FWP, US National Park Service, US Fish and Wildlife Service, US Bureau of Reclamation, US Army Corps of Engineers





www.musselresponse.mt.gov

www.facebook.com/MTMusselResponse

444-2440



Montana
MUSSEL RESPONSE



*Montana Fish,
Wildlife & Parks*