

# ASIAN LONGHORNED BEETLE

## *An Unwanted Invasive Species*



The Asian longhorned beetle (ALHB, *Anoplophora glabripennis*) is a highly destructive wood-boring pest of maples and other hardwood trees including poplar, birch and willow. ALHB infests and kills healthy trees, devastating urban and rural communities.

Adult beetles are 20–35 mm long, shiny black, with up to 20 white spots on each wing cover.

### Signs and symptoms of this pest include:



Thinning crowns/dead branches.



Sawdust and wood shavings (frass).



Egg laying sites created by females chewing into the bark.



Galleries & tunnels under the bark. Cracked or missing bark.

### ALHB

Actual Size



Round exit holes (6–14 mm) made by adult beetles emerging from the tree.



Foamy or frothy sap running from recent egg laying sites.

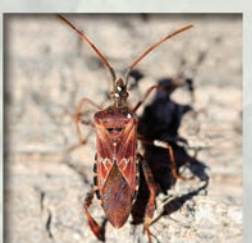


New (reddish brown) & old (dark) egg laying sites. Note 'teeth marks'.

### NOT ALHB



**Banded alder borer.** Native to BC. Similar in size to ALHB, but flattened and has alternating transverse black and gray bands.  
20 – 35 mm long



**Western conifer-seed bug.** Across Canada. Up to 20 mm in length. Reddish-brown to gray-brown. Spines and “leaf pattern” on legs.  
Up to 20 mm long



**Pine sawyers.** Across Canada. Smaller (18–27 mm) than ALHB. Brown or black but not shiny. Wing covers appear “pitted”, not smooth like ALHB.  
18 – 27 mm long

ALHB is native to Asia and can be introduced into Canada with infested wood packaging material (e.g. wooden pallets, crates, boxes, etc.). Once in a new environment, ALHB can disperse naturally or spread long-distance through transport of infested wood products including firewood and logs.

### You can help protect your community from this invasive insect:

- Check trees for evidence of ALHB
- Collect suspect ALHB specimens, if found
- Report suspect ALHB or ALHB tree damage to **1-800-442-2342**
- Don't move firewood

For more information on this subject please visit our website at: [www.inspection.gc.ca](http://www.inspection.gc.ca)

Photo credits: M. Bohne, D. Cappaert, D. Haugen (Bugwood.org), N. Wright, K. Bolte, B. Gill, T. Poiré, L. Schimming, M.T. Smith.

